

DATA SHEET

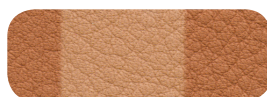


TESTED FOR	RESULT	CONFIRM TO DIN
------------	--------	----------------

BROWNIE 841

Lightfastness: 1 - 2 54004

Possible color change:



Abrasion values:	Level:	
Dry	4	53339
Wet	3	
Perspiration	2 - 3	

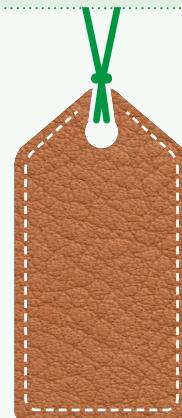
Permanent folding behavior:
20.000 bucklings passed 53340

Tensile strength:
20 N/mm passed 53329

Burning behavior:
y EN1021 part I u. II passed

Detailed information about light fastness, abrasion values, skin tolerance and burning behaviour can be found at:
www.vegetable-tanned-leather.com/data-and-facts.html

Tested for
Heavy metals, aniline
(Conducted by the German Institute of Environment in Bremen, 2014)



Color: Brownie 841
Collection: Nappa
Thickness: 1,4 - 1,6 mm



* Valid only for skins from eco farming
(Please ask for availability)

DATA SHEET



Results of the examination for aniline

Parameter	H 8464 FL-2 Ecopell 841 Brownie KW 52 (mg/kg)	NG (mg/kg)	Requirements IVN Leather (mg/kg)
Aniline	nn	3	≤ 60*

* Sum limit for further amines going beyond European legislation
(2,4 Xylidine, N,N. Dimethylaniline, 5-Chlorine-o-toluidine, p-Phenylenediamine and Aniline)

Results of the examination for heavy metals

Heavy metals	H 8464 FL-2 Ecopell 841 Brownie KW 52 (mg/kg)	BG (mg/kg)	Requirements IVN Leather (mg/kg)
Antimony	<0,5	0,5	1
Aluminium	40	10	500
Arsenic	<0,5	0,5	1
Lead	<0,5	0,5	1
Cadmium	<0,2	0,2	0,2
Chrome	10	1	50
Cobalt	<1	1	5
Mercury	<0,1	0,1	0,2
Nickel	<1	1	5
Titanium	<10	10	500
Zirconium	<5	5	500

BG = limit of determination | NG = detection limit | mg/KG = milligram per kilogram | nn = not detected